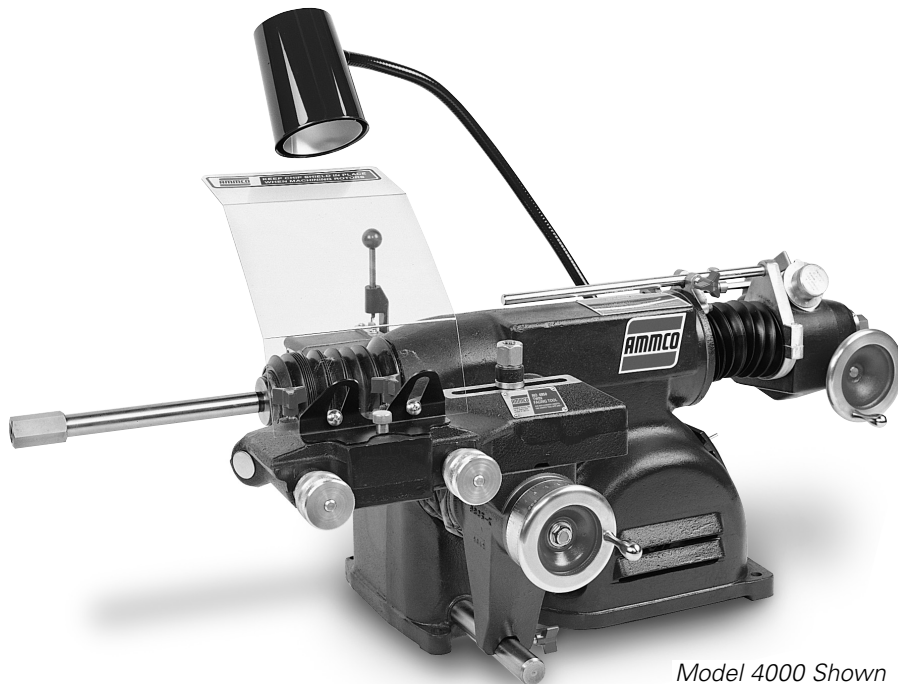




3000, 4000, 4100, 7500, 7700 Drum & Disc Brake Lathes



Model 4000 Shown

Parts Identification

READ these instructions before placing unit in service. KEEP these and other materials delivered with the unit in a binder near the machine for ease of reference by supervisors and operators.

HENNESSY INDUSTRIES, INC.

1601 J. P. Hennessy Drive, LaVergne, TN USA 37086-3565 615/641-7533 800/688-6359

HENNESSY INDUSTRIES INC. Manufacturer of AMMCO®, COATS® and BADA® Automotive Service Equipment and Tools.

Manual Part No.: 940940 08

Revision: 09/09

Parts Identification

Table of Contents

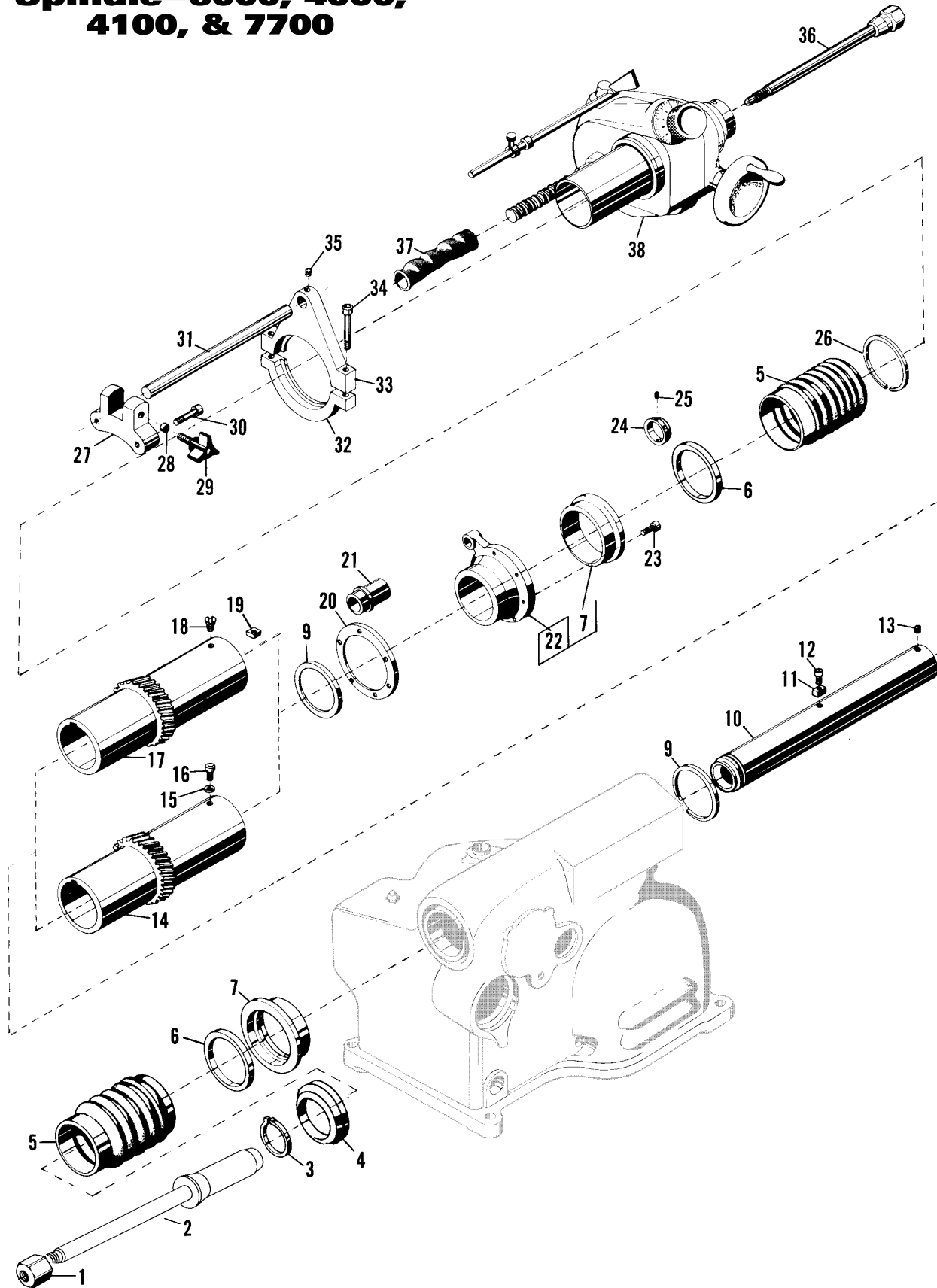
| | |
|---|---------|
| Electrical Panel Assembly | 3 |
| Main Frame Assembly Spindle—3000, 4000, 4100, & 7700 | 4 - 5 |
| Variable Drum Feed Gearbox Assembly 3037-B | 6 - 7 |
| Motor Mount and Drive Shaft | 8 - 9 |
| Disc Brake Feed Mechanism 7751-B | 10 - 11 |
| 6950 Twin Cutter | 12 |
| 7900 Twin Cutter & Safety Sheild | 13 |
| Crossfeed Assemblby | 14 |
| Spindle—7500 | 15 |

Parts Identification

The following pages include full parts breakdowns with exploded view illustrations to help with ordering replacement or spare parts. Assemblies are noted where it is recommended that individual parts not be ordered separately. These parts are available only as assemblies because some parts are staked, pinned, or press fitted, then drilled, machined, or bored. Close tolerances must be maintained in assembly. Every effort is made to supply accurate exploded views, however, due to interim changes in manufacturing operations, some units may not be exactly as illustrated.

Parts Identification

Main Frame Assembly Spindle—3000, 4000, 4100, & 7700



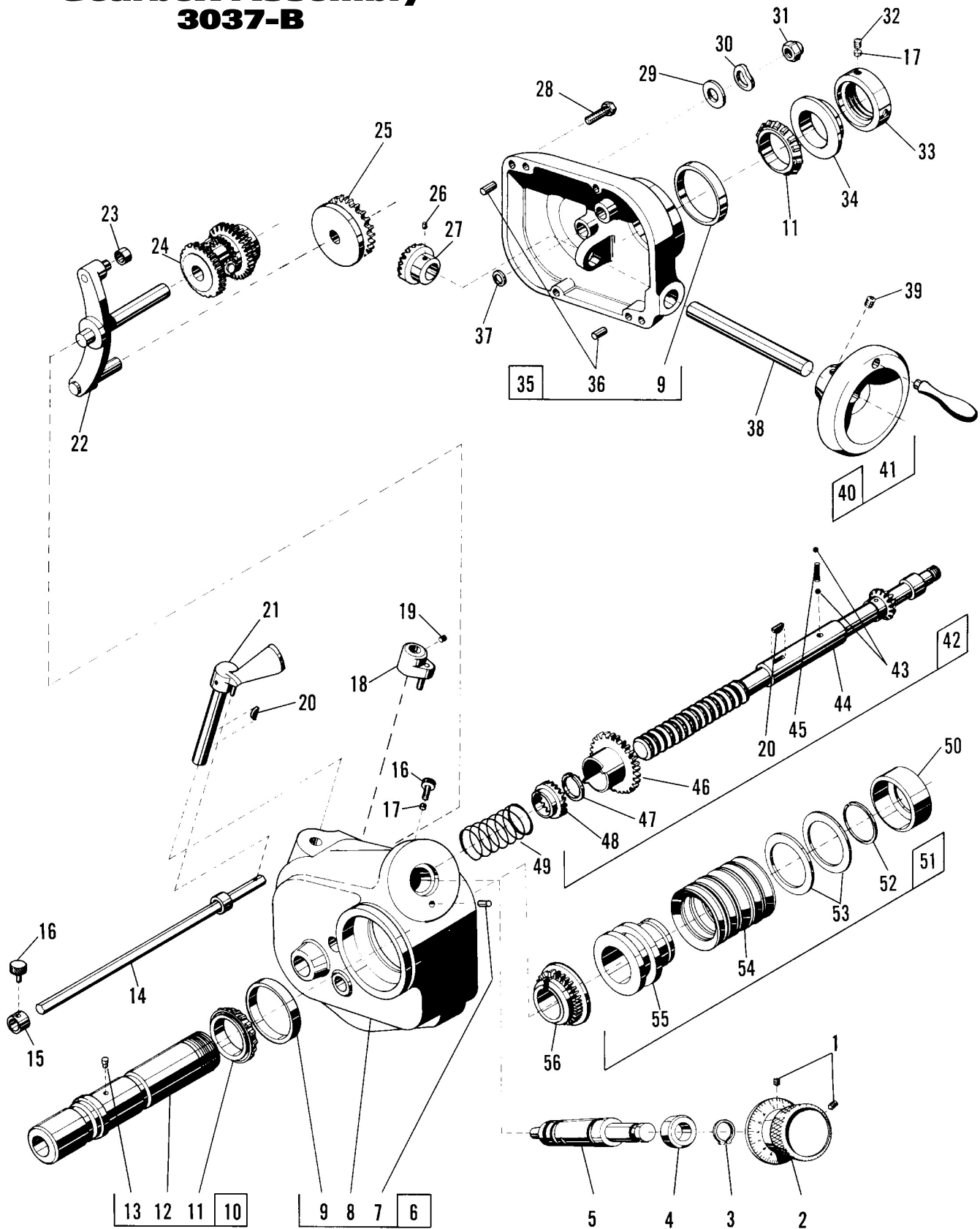
Parts Identification

| Item | Qty | Part No. | Description |
|------|-----|----------|--------------------------------|
| 1 | 1 | 903102 | Nut, Arbor |
| 2 | 1 | 903101 | Arbor |
| 3 | 1 | 903159 | Ring, Retaining |
| 4 | 1 | 923682 | Ring, Adapter |
| 5 | 2 | 903085 | Boot |
| 6 | 1 | 941041 | Seal, Oil |
| 7 | 2 | 903089 | Ring, Oil Seal Adapter |
| 9 | 2 | 903033 | Washer, Thrust |
| 10 | 1 | 903153 | Spindle Body, 3000/4000 |
| | | 907714 | Spindle Body, 4100/7700 |
| 11 | 1 | 909831 | Key, Drive |
| 12 | 1 | 906486 | Screw, Socket Head Cap |
| 13 | 1 | 903224 | Screw, Cuppoint Set |
| 14 | 1 | 909830 | Quill, Drive, 3000/4000 |
| 15 | 1 | 900283 | Washer, Lock, 3000/4000 |
| 16 | 1 | 901602 | Screw, Hex Hd. Cap, 3000/4000 |
| 17 | 1 | 910216 | Quill, Drive, 4100/7700 |
| 18 | 1 | 906868 | Screw, Flat Hd., 4100/7700 |
| 19 | 1 | 910737 | Block, Keyway, 4100/7700 |
| 20 | * | 903032 | Shim (0.005 THK) |
| | * | 921322 | Shim (0.0075 THK) |
| 21 | 1 | 904670 | Nut, Lead Screw, 4000/7000 |
| | 1 | 907712 | Nut, Lead Screw, 4100/7700 |
| 22 | 1 | 907344R | Rear Flange Assy., 3000/4000 |
| | 1 | 907729R | Rear Flange Assy., 4100/7700 |
| 23 | 6 | 900209 | Screw, Skt. Hd. Cap, 3000/7700 |
| | 4 | | Screw, Skt. Hd. Cap, 4000/4100 |
| 24 | 1 | 904671 | Nut, Take Up |
| 25 | 1 | 903338 | Screw, Skt. Hd. Set |
| 26 | 1 | 904435 | Ring, Boot, 4000/4100 |
| | 1 | 903595 | Spring, Boot, 3000/7700 |
| 27 | 1 | 909592 | Clamp, Front |
| 28 | 1 | 903142 | Plug, Brass |
| 29 | 1 | 906854 | Knob |
| 30 | 2 | 903319 | Screw, Skt. Hd. Cap, 4000/4100 |
| 31 | 1 | 909645 | Rod, Lock, 4000 |
| | 1 | 909593 | Rod, Lock, 4100 |
| 32 | 1 | 909998 | Clamp, Rear, Lower |
| 33 | 1 | 909999 | Clamp, Rear, Upper |
| 34 | 2 | 906825 | Screw, Skt. Hd. Cap |
| 35 | 1 | 900213 | Screw, Set |
| 36 | 1 | 907005 | Drawbar & Nut Assy., 3000/4000 |
| | 1 | 907716 | Drawbar & Nut Assy., 4100/7700 |
| 37 | 1 | 903086 | Boot & Spring, 3000/4000 |
| | 1 | 907703 | Boot & Spring, 4100/7700 |
| 38 | 1 | 903037B | Feed Mechanism, 3000/4000 |
| | 1 | 907702 | Feed Mechanism, 4100/7700 |

* Quantity as Required

Parts Identification

Variable Drum Feed Gearbox Assembly 3037-B



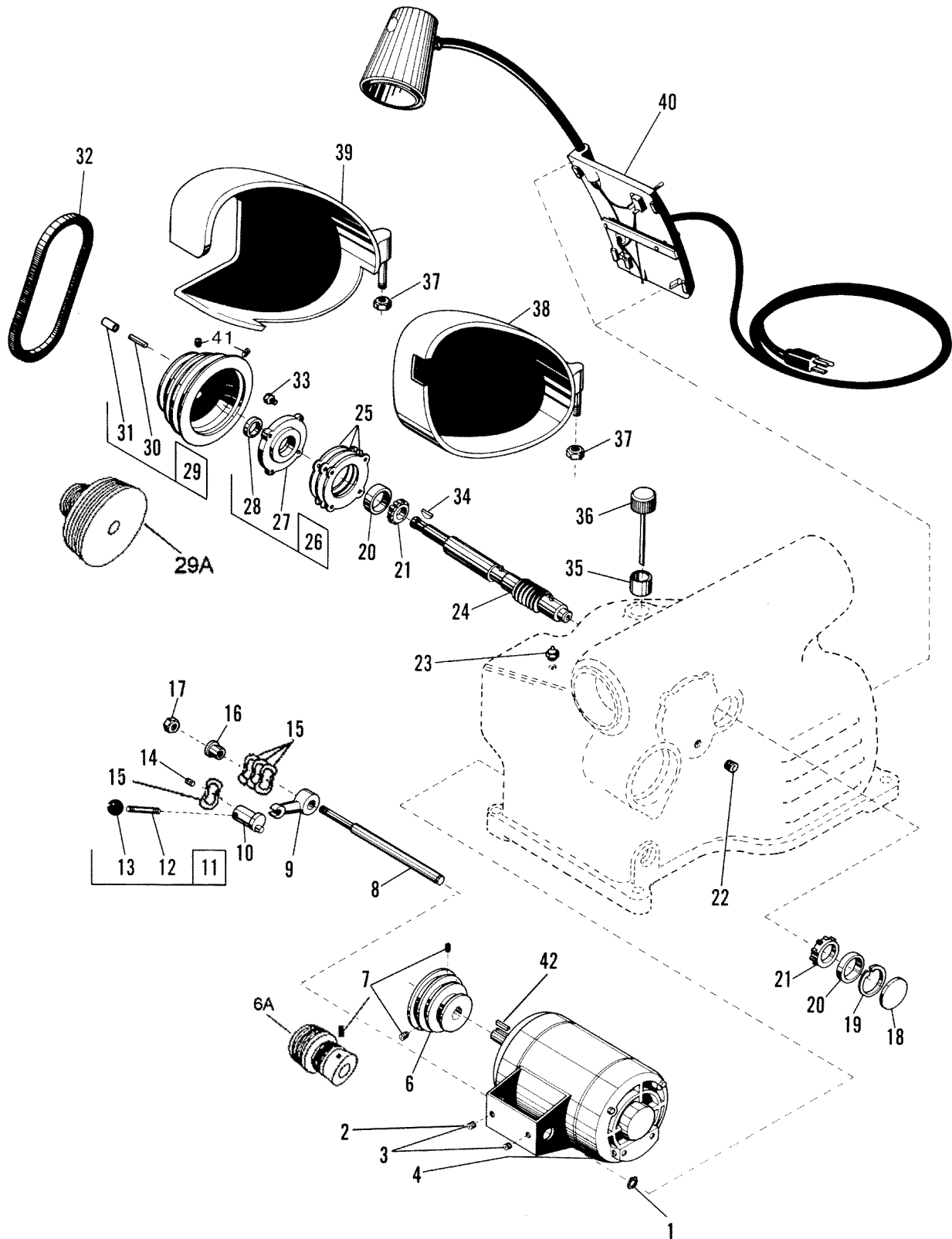
Parts Identification

| Item | Qty | Part No. | Description | Item | Qty | Part No. | Description |
|------|-----|----------|---|------|--------|--|---|
| 1 | 2 | 911241 | Screw, Allen Set | 31 | 1 | 903184 | Nut, Stop |
| 2 | 1 | 903043 | Feed Dial Assembly | 32 | 1 | 900213 | Screw, Allen Set |
| 3 | 1 | 903097 | Ring, Retaining | 33 | 1 | 909443 | Nut, Bearing Lock |
| 4 | 1 | 909930 | Bearing, Thrust | 34 | 1 | 909444 | Washer, Spherical |
| 5 | 1 | 903066 | Screw, Feed Adjusting | 35 | 1 | 909498 | Gear Case Cover Assembly |
| 6 | 1 | 903715 | Gear Case Assembly | 36 | 2 | 903038 | Pin, Dowel |
| 7 | 1 | 903132 | Pin, Groove | 37 | 1 | 904641 | Washer, Bone Fiber |
| 8 | 1 | 903715 | Gear Case | 38 | 1 | 903054 | Shaft |
| 9 | 1 | 903392 | Cup, Bearing | 39 | 1 | 900220 | Screw, Set |
| 10 | 1 | 907007 | Spindle Extension Assembly | *40 | 1 | 903090 | Handwheel Assembly |
| 11 | 1 | 903391 | Bearing, Taper Roller | 41 | 1 | 903026 | Handle, Crank |
| 12 | 1 | 903154 | Spindle Extension | 42 | 1 | 908235 | Lead Screw and Clutch Assembly 3000/4000 |
| 13 | 1 | 903092 | Pin, Groove | | | | |
| 14 | 1 | 903040 | Shut-Off Assy, 3000/4000 | 1 | 908237 | Lead Screw and Clutch Assembly 4100/7500/7700 | |
| | 1 | 907717 | Shut-Off Assy, 4100/7500/7700 | | | | |
| 15 | 1 | 903039 | Collar, Stop | 43 | 2 | 900311 | Ball, Steel |
| 16 | 2 | 903084 | Screw, Knurled | *44 | 1 | 909918 | Lead Screw/Miter Gear Assembly 3000/4000 |
| 17 | 2 | 903141 | Plug, Brass | | | | |
| *18 | 1 | 903058 | Clutch Shifter Assembly | 1 | 909919 | Lead Screw/Miter Gear Assembly 4100/7500/7700 | |
| 19 | 1 | 900212 | Screw, Allen Set | | | | |
| 20 | 2 | 904449 | Key, Hy-Pro | 45 | 1 | 903060 | Spring, Clutch |
| *21 | 1 | 903042 | Clutch Handle And Shaft Assy. | 46 | 1 | 903047 | Gear, Sliding Clutch |
| *22 | 1 | 907343 | Feed Control Lever and Differential Assembly | 47 | 1 | 906163 | Ring, Retaining |
| 23 | 1 | 903036 | Roller | 48 | 1 | 907264 | Clutch Jaw |
| 24 | 1 | 907338 | Pinion Bushing Assy. | 49 | 1 | 907263 | Spring, Coil |
| *25 | 1 | 903081 | Driven Friction Disc and Bearing Assembly | 50 | 1 | 903061 | Cup, Spring Loading |
| 26 | 1 | 903098 | Screw, Dog Point Set | 51 | 1 | 903082 | Friction Disc Assy. |
| 27 | 1 | 903069 | Gear, Miter | 52 | 1 | 903093 | Ring, Retaining |
| 28 | 4 | 903094 | Screw, Socket Hd. Cap | 53 | 2 | 903064 | Washer |
| 29 | 4 | 903324 | Washer | 54 | 10 | 903062 | Spring, Belleville |
| 30 | 1 | 906155 | Washer, Wave | 55 | 1 | 903078 | Disc, Sliding Friction |
| | | | | 56 | 1 | 903077 | Clutch, Fixed Friction |

*Sold as assembly only.

Parts Identification

Motor Mount and Drive Shaft



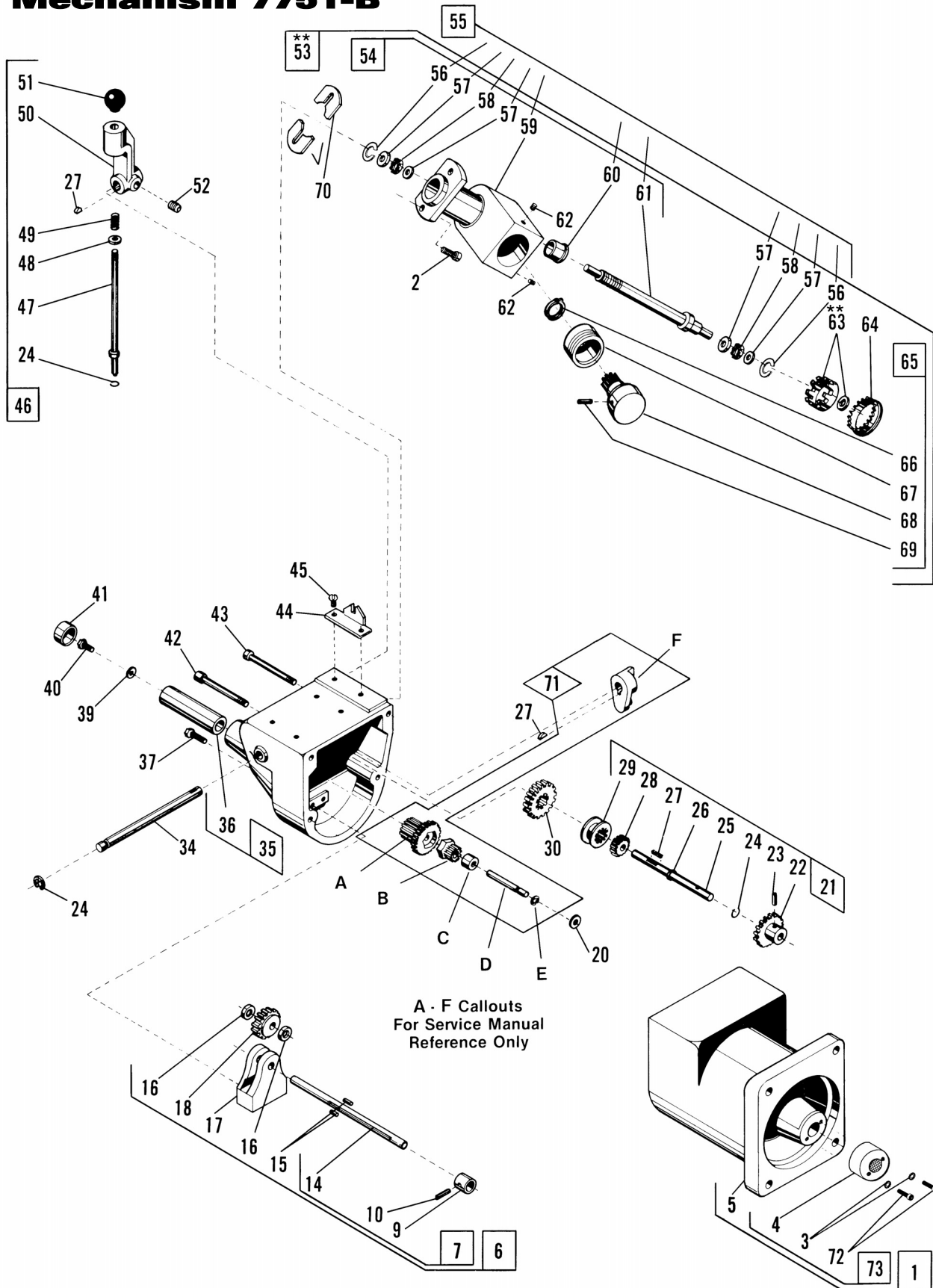
Parts Identification

| Item | Qty | Part No. | Description |
|------|-----|----------|------------------------------------|
| 1 | 1 | 906766 | O-Ring |
| 2 | 2 | 906101 | Screw, Hex Hd. Cap |
| 3 | 2 | 921557 | Washer, Lock |
| 4 | 1 | 902165 | Motor/Bracket Assy. |
| 6 | 1 | 903024 | Pulley, Drive, 3000/4000** |
| | 1 | 903639 | Pulley, Drive, 4100/7700** |
| 6A | 1 | 940142 | Pulley, Drive, Poly-V-Belt** |
| 7 | 4 | 900220 | Set Screw, 3000/4000/7500** |
| | 2 | 900217 | Set Screw, 4100/7700** |
| 8 | 1 | 903023 | Shaft, Motor Mount |
| 9 | 1 | 903015 | Lever, Belt Tension |
| 10 | 1 | 903035 | Pin, Eccentric Belt Release |
| 11 | 1 | 907348 | Lever Belt Release Assy. |
| 12 | 1 | 903088 | Handle, Belt Release |
| 13 | 1 | 900320 | Knob, Ball |
| 14 | 1 | 903180 | Screw, Socket Hd. |
| 15 | * | 902364 | Washer, Wave (*Qty As Required) |
| 16 | 1 | 903223 | Bushing, Motor Mount Shaft |
| 17 | 1 | 903377 | Nut, Hex |
| 18 | 1 | 903166 | Plug, Welch |
| 19 | 1 | 903172 | Ring, Retaining I.D. |
| 20 | 2 | 903394 | Cup, Bearing |
| 21 | 2 | 903393 | Bearing, Cone |
| 22 | 1 | 903372 | Plug, Allen Pipe |
| 23 | 1 | 922006 | Fitting, Grease |
| 24 | 1 | 9847-C | Shaft, Worm W/Woodruff Keyway |
| | 1 | 940140 | Shaft, Worm W/Square Keyway |
| 25 | * | 903169 | Shim, 0.005" (*Qty As Required) |
| | * | 903170 | Shim, 0.007" (*Qty As Required) |
| | * | 903171 | Shim, 0.020" (*Qty As Required) |
| 26 | 1 | 903186 | Cap And Seal Assy. |
| 27 | 1 | 903010 | Cap, Bearing Seal |
| 28 | 1 | 903163 | Seal, Oil |
| 29 | 1 | 907784-1 | Pulley W/Pin & Tube** |
| 29A | 1 | 940146-2 | Pulley W/Pin & Tube, Poly-V-Belt** |
| 30 | 1 | 924239 | Pin, Groove, 4000/4100 |
| 31 | 1 | 925588 | Tube, Rubber, 4000/4100 |
| 32 | 1 | 903161 | V-Belt, 3000,4000** |
| | 1 | 910241 | V-Belt, 4100/7700** |
| | 1 | 940141 | Poly V-Belt** |
| 33 | 1 | 900236 | Screw, Hex Hd. Cap |
| 34 | 1 | 924446 | Key, Woodruff |
| | 1 | 940139 | Key, Square |
| 35 | 1 | 903215 | Sleeve, Oil Filler |
| 36 | 1 | 903148 | Dipstick |
| 37 | 1 | 911273 | Nut, Self-Locking |
| 38 | 1 | 903005 | Guard, Belt, 3000/7700 |
| 39 | 1 | 907788 | Guard, Belt, 4000/4100/7500 |
| 40 | 1 | 910352 | Panel Assy., Electrical |
| 41 | 2 | 900220 | Screw, Set** |
| 42 | 1 | 925454 | Key, Square |
| * | 1 | 940175 | Kit, Poly-V-Belt |
| * | 1 | 941260 | Kit, Standard V-belt, 4100 |

** Check your unit to see if it uses the 3-groove pulley and standard V-belt or the 2-groove pulley and poly V-belt. Order the pulley, set screw, and V-belt that matches your unit.

Parts Identification

Disc Brake Feed Mechanism 7751-B



Parts Identification

| Item | Qty | Part No. | Description |
|------|-----|----------|--------------------------------|
| 1 | 1 | 910870 | Gear Case Assembly |
| 2 | 4 | 903221 | Screw, Socket Head |
| 3 | 2 | 903910 | Washer, Lock |
| 5 | 1 | 907790 | Case, Gear |
| 4 | 1 | | |
| *6 | 1 | 940718 | Drive Rod and Coupling Assy. |
| *7 | 1 | 940719 | Universal Coupling Assy. |
| *9 | 1 | 940717 | Coupler |
| *10 | 1 | 940403 | Pin, Roll |
| 14 | 1 | 907774 | Rod, Drive |
| 15 | 2 | 906937 | Pin, Dowel |
| 16 | 2 | 906973 | Washer, Thrust |
| 17 | 1 | 907775 | Trap |
| 18 | 1 | 907778 | Gear, Drive |
| 20 | 1 | 906350 | Washer, Bone Shim |
| 21 | 1 | 909814 | Shifter Shaft Assy. |
| 22 | 1 | 907994 | Gear, Helix |
| 23 | 1 | 904006 | Pin, Roll |
| 24 | 2 | 905613 | Ring, Retaining |
| 25 | 1 | 907764 | Shaft, Clutch |
| 26 | 1 | 906138 | Ring, Retaining |
| 27 | 5 | 903176 | Key, Woodruff |
| 28 | 1 | 909816 | Gear, Fine Feed |
| 29 | 1 | 909813 | Clutch |
| 30 | 1 | 909812 | Gear, Coarse Feed |
| 34 | 1 | 907748 | Shaft, Shift |
| 35 | 1 | 907902 | Gear Case Cover and Tube Assy. |
| 36 | 1 | 907783 | Tube |
| 37 | 2 | 903221 | Screw, Socket Hd. Cap |
| 39 | 1 | 904789 | Washer |
| 40 | 1 | 906254 | Screw, Socket Hd. Cap |
| 41 | 1 | 906974 | Cap, Tube |
| 42 | 2 | 906392 | Screw, Hex Hd. Machine |
| 43 | 2 | 906391 | Screw, Hex Hd. Machine |
| 44 | 1 | 907747 | Plate, Index |
| 45 | 2 | 904508 | Screw, Round Hd. Machine |

| Item | Qty | Part No. | Description |
|------|-----|----------|-----------------------------------|
| 46 | 1 | 907742 | Shifter Handle Assy. |
| 47 | 1 | 907746 | Pin, Shifter Handle |
| 48 | 1 | 906451 | Washer |
| 49 | 1 | 907699 | Spring |
| 50 | 1 | 907744 | Body, Shifter Handle |
| 51 | 1 | 900320 | Knob, Ball |
| 52 | 1 | 900220 | Screw, Set |
| **53 | 1 | 909815 | Driven Assy., Right Angle Drive |
| 54 | 1 | 924241 | Worm Drive Assy. |
| *55 | 1 | 940401 | Worm Shaft Repair Kit |
| *56 | 1 | 905639 | C Clip |
| *57 | 2 | 906872 | Washer, Travel |
| 58 | 1 | 906871 | Bearing, Needle Thrust |
| 59 | 1 | 907998 | Housing, Drive |
| 60 | 1 | 906749 | Bushing, Oilite |
| *61 | 1 | 907997 | Worm Drive Assy. |
| 62 | 2 | 906834 | Screw, Cone Point Set |
| **63 | 1 | 907996 | Shear Gear And Ring Assy. |
| 64 | 1 | 906446 | Plug, Dot |
| 65 | 1 | 909821 | Coupling Assy. |
| 66 | 1 | 903174 | Ring, Retaining |
| 67 | 1 | 909825 | Spacer And Bushing Assy. |
| 68 | 1 | 909822 | Coupling And Gear Assy. |
| 69 | 1 | 904096 | Pin, Roll |
| 70 | 2 | 907908 | Shim, 0.005" |
| | 2 | 907903 | Shim, 0.010" |
| | 2 | 907904 | Shim, 0.020" |
| | 2 | 907905 | Shim, 0.030" |
| 71 | 1 | 924516 | Shifter & Intermediate Gear Assy. |
| 72 | 2 | 928367 | Screw, Cap |
| 73 | 1 | 928529 | Lead Screw Nut Kit |

*Sold as assembly only.

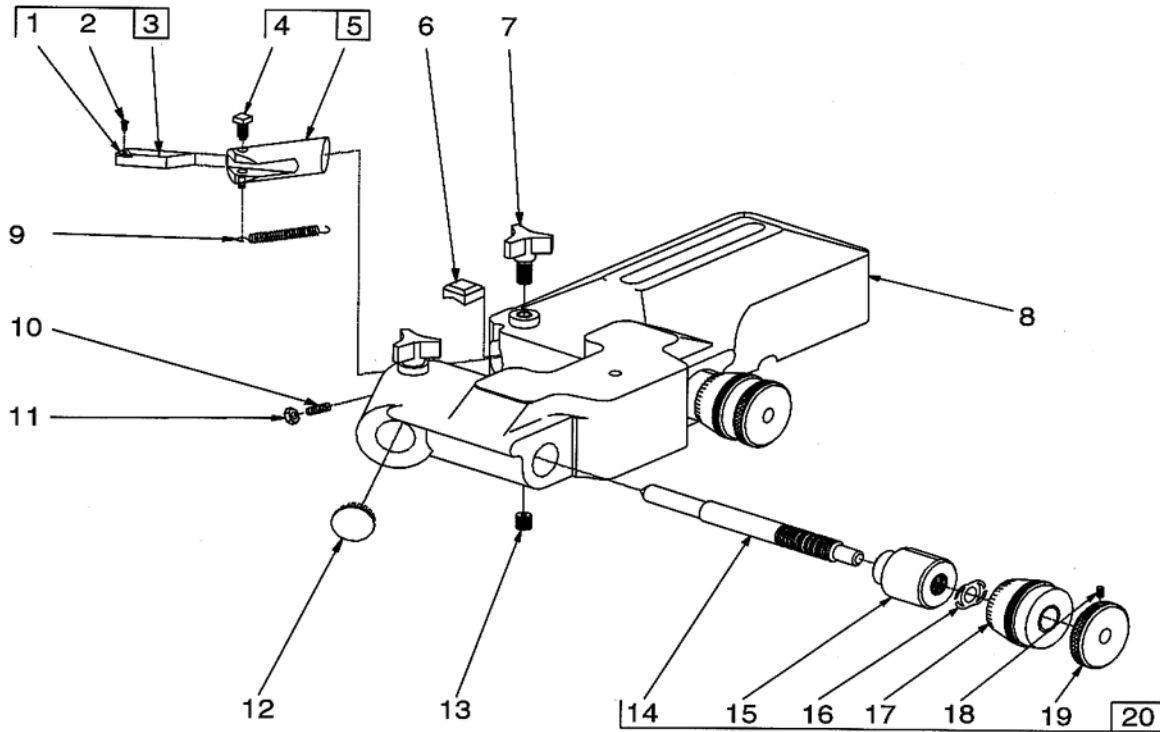


**** The 940907 metal face gear can only be used in conjunction with lathes equipped with a circuit breaker located on the electrical panel.**

The plastic 907996 shear gear can be used on lathes with or without the circuit breaker. Failure to follow these instructions may lead to minor personal injury or product or property damage.

Parts Identification

6950 Twin Cutter



| Item | Qty | Part No. | Description |
|------|-----|----------|-------------------------------------|
| *1 | 2 | 906918 | Carbide Insert, Positive Rake |
| ** | 2 | 906914 | Carbide Insert, Negative Rake |
| | 2 | 906499 | Screw, #4-40 X .25 Oval Head |
| *3 | 1 | 925968 | Holder, Tool Bit, RH, Positive Rake |
| * | 1 | 925969 | Holder, Tool Bit, LH, Positive Rake |
| ** | 1 | 910701 | Holder, Tool Bit, RH, Neg. Rake |
| ** | 1 | 910702 | Holder, Tool Bit, LH, Neg. Rake |
| 4 | 2 | 909249 | Screw, Square Head Set |
| 5 | 1 | 910650 | Tool Holder, Left Hand |
| | 1 | 910651 | Tool Holder, Right Hand |
| 6 | 2 | 928584 | Gib, Brass, Tool Holder |
| 7 | 1 | 906854 | Screw, Lock |
| 8 | 1 | 928572 | Twin Cutter Housing |
| 9 | 1 | 906905 | Spring |
| 10 | 2 | 909879 | Screw, Locating |
| 11 | 2 | 903528 | Nut, Hex |
| 12 | 2 | 906977 | Plug, Dot |

| Item | Qty | Part No. | Description |
|------|-----|----------|--------------------|
| 13 | 2 | 906109 | Screw, 3/16-16 Set |
| 14 | 2 | 906908 | Rod, Dial |
| 15 | 2 | 906906 | Plug, Dial |
| 16 | 2 | 906929 | Washer, Spring |
| 17 | 2 | 906907 | Dial, Micrometer |
| 18 | 2 | 903338 | Screw, Set |
| 19 | 2 | 906923 | Knob, Dial Rod |
| 20 | 1 | 906901 | Dial Assembly |
| † | 1 | 909481 | Shield Assembly |

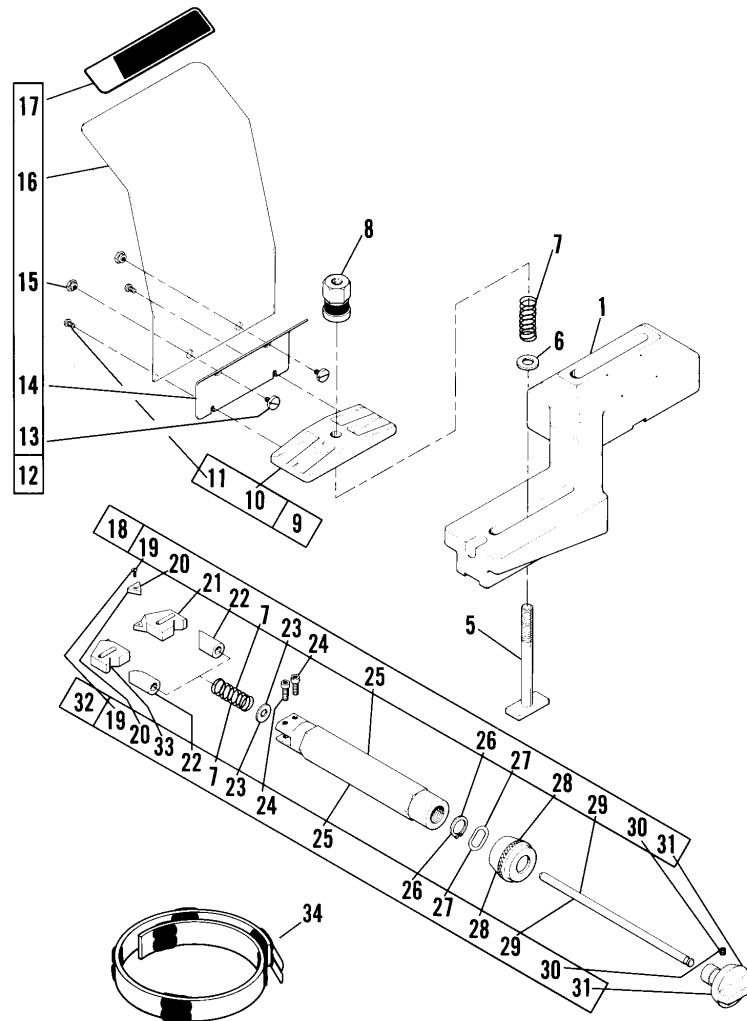
Note: These parts are not included with the 6950 Twin Cutter tool.

For a complete assembly, order one of the following:
 *28800 twin cutter with positive rake tool holders and bits.
 **29800 twin cutter with negative rake tool holders and bits.

† Not Shown

Parts Identification

7900 Twin Cutter & Safety Shield



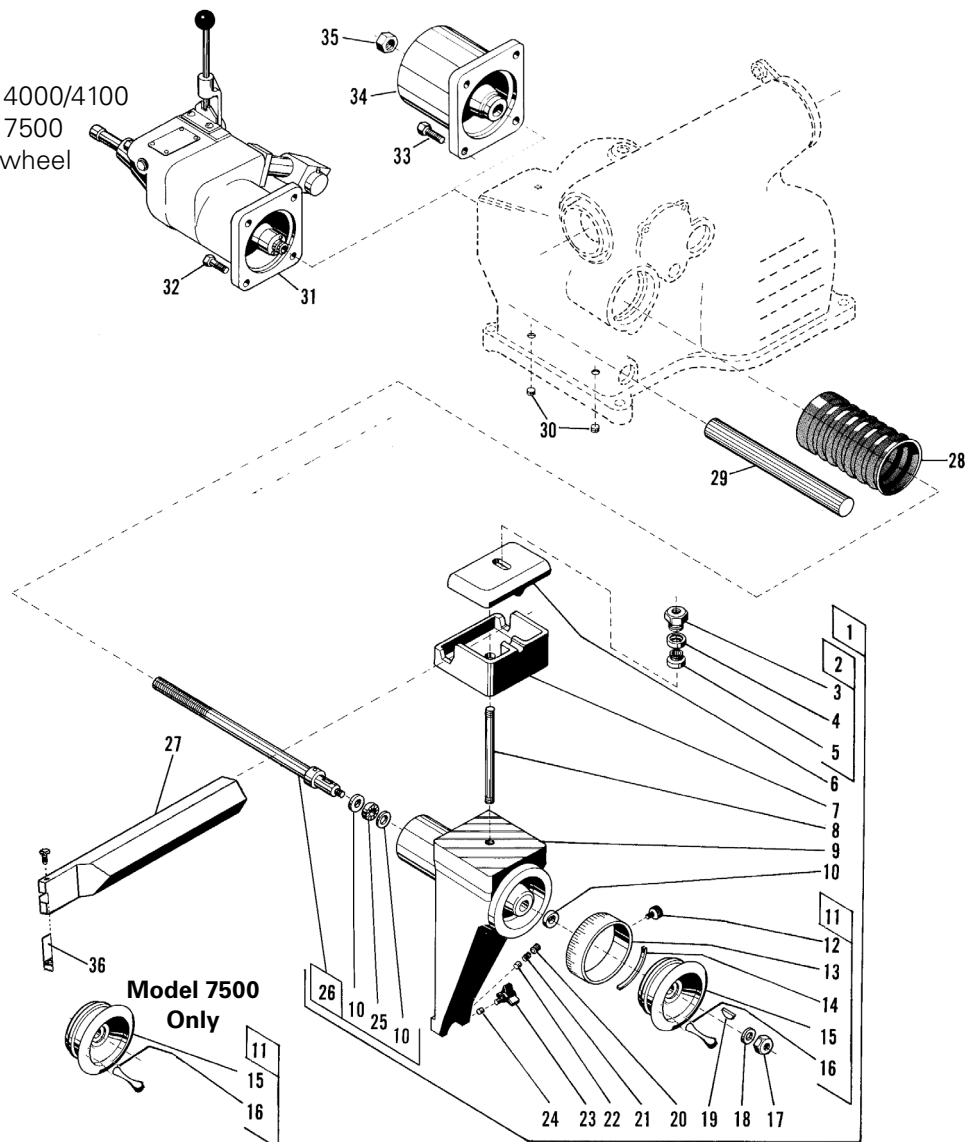
| Item | Qty | Part No. | Description | Item | Qty | Part No. | Description |
|------|-----|----------|-----------------------------------|------|-----|----------|----------------------------|
| 1 | 1 | 925982 | Support, Tool Bar | 20 | 1 | 906914-2 | Bit, Carbide, Package Of 2 |
| 5 | 1 | 923556 | Bolt, T | 21 | 1 | 925762 | Holder |
| 6 | 1 | 903214 | Washer, Flat | 22 | 1 | 925754 | Sleeve |
| 7 | 3 | 925756 | Spring, Compression | 23 | 1 | 924922 | Washer, Flat |
| 8 | 1 | 911227 | Nut/Washer, Hex, Self-Align, Assy | 24 | 1 | 925757 | Screw, Shoulder |
| 9 | 1 | 926018 | Clamp Assy. | 25 | 1 | 925984 | Bar, Boring |
| 10 | 1 | 925985 | Clamp | 26 | 1 | 925759 | Ring, Retaining, External |
| 11 | 2 | 904508 | Screw, Pan Hd., Machine | 27 | 1 | 925758 | Washer, Wave |
| 12 | 1 | 926015 | Shield Assy. | 28 | 1 | 925752 | Dial, Micrometer |
| 13 | 2 | 911150 | Screw, Retainer | 29 | 1 | 925983 | Rod, Dial |
| 14 | 1 | 926014 | Bracket | 30 | 1 | 903338 | Screw, Set, Cup Point |
| 15 | 2 | 911166 | Insert, Nut | 31 | 1 | 925751 | Dial, Depth |
| 16 | 1 | 911154 | Shield | 32 | 1 | 925981 | Bar, Tool, LH, Assy. |
| 17 | 1 | 926016 | Decal, Safety | 33 | 1 | 925761 | Holder |
| 18 | 1 | 925980 | Bar, Tool, RH, Assy. | 34 | 1 | 906930 | Band, Silencer, HD, Assy. |
| 19 | 1 | 906499 | Screw, Oval Hd., Machine | | | | |

Parts Identification

Cross Feed Assembly

Models 4000, 4100 & 7500 Only

| Item | Qty | Part No. | Description | Item | Qty | Part No. | Description |
|------|-----|----------|---|------|-----|----------|-------------------------------|
| 1 | 1 | 907345 | Cross Feed Assembly | 23 | 1 | 906854 | Lock Screw |
| 2 | 1 | 911227 | Nut/Washer, Hex, Self-Align, Assy. | 24 | 1 | 903142 | Plug |
| 3 | 1 | 911221 | Nut, Locking | 25 | 1 | 906873 | Bearing, Needle Thrust |
| 4 | 1 | 911225 | Retainer | 26 | 1 | 903211-1 | Lead Screw Assembly |
| 5 | 1 | 911224 | Washer | 27 | 1 | 905843 | Boring Bar, 4000 |
| 6 | 1 | 903017 | Clamp, Boring Bar, Upper (Except 7500) | | 1 | 905844 | Boring Bar, 4100 |
| 7 | 1 | 920666 | Clamp, Boring Bar, Lower (Except 7500) | 28 | 1 | 903087 | Crossfeed Boot |
| 8 | 1 | 903031 | Stud, Boring Bar | 29 | 1 | 910346 | Bar, Guide |
| 9 | 1 | 909835 | Crossfeed | 30 | 1 | 901680 | Set Screw |
| 10 | 3 | 906874 | Race | 31 | 1 | 907751B | Gearbox Assy., 4000/4100/7500 |
| 11 | 1 | 909626 | Crossfeed Handwheel Assembly, 4000/4100 | 32 | 4 | 900237 | Screw, Cap 4000/4100/7500 |
| | 1 | 940281 | Crossfeed Handwheel Assy, 7500 | 33 | 4 | 901127 | Screw, Cap 3000/7700 |
| 12 | 1 | 906839 | Screw, Set | 34 | 1 | 903007 | Cap, Lead Screw, 3000/7700 |
| 13 | 1 | 909634 | Dial | 35 | 1 | 900237 | Nut, 3000/7700 |
| 14 | 1 | 909611 | Spring, Dial | 36 | 1 | 909872 | Toolbit Package |
| 15 | 1 | 909633 | Handwheel, 4000/4100 | | | | |
| | 1 | 910328-1 | Handwheel, 7500 | | | | |
| 16 | 1 | 903026 | Crank, Handwheel | | | | |
| 17 | 1 | 902309 | Nut | | | | |
| 18 | 1 | 903214 | Washer | | | | |
| 19 | 1 | 903176 | Key | | | | |
| 20 | 1 | 900220 | Screw, Set | | | | |
| 21 | 1 | 902064 | Spring | | | | |
| 22 | 1 | 909836 | Plug | | | | |



Parts Identification

Spindle—7500

| Item | Qty | Part No. | Description |
|------|-----|----------|------------------------|
| 1 | 1 | 903102 | Nut, Arbor |
| 2 | 1 | 903101 | Arbor |
| 4 | 1 | 941041 | Seal, Oil |
| 5 | 1 | 940021 | Spindle And Gear Assy. |
| *5A | 1 | 910315-1 | Spindle Gear |
| *5B | 1 | 903177 | Roll Pin |
| 6 | 1 | 910303 | Spacer |
| 7 | 2 | 906979 | Bearing |
| 8 | 1 | 903032 | Shim |
| 9 | 1 | 910316 | Flange, Rear |
| 10 | 6 | 900209 | Screw |
| 11 | 1 | 906981 | Washer, Lock |
| 12 | 1 | 906980 | Nut, Lock |
| 13 | 1 | 910364 | Drawbar |

